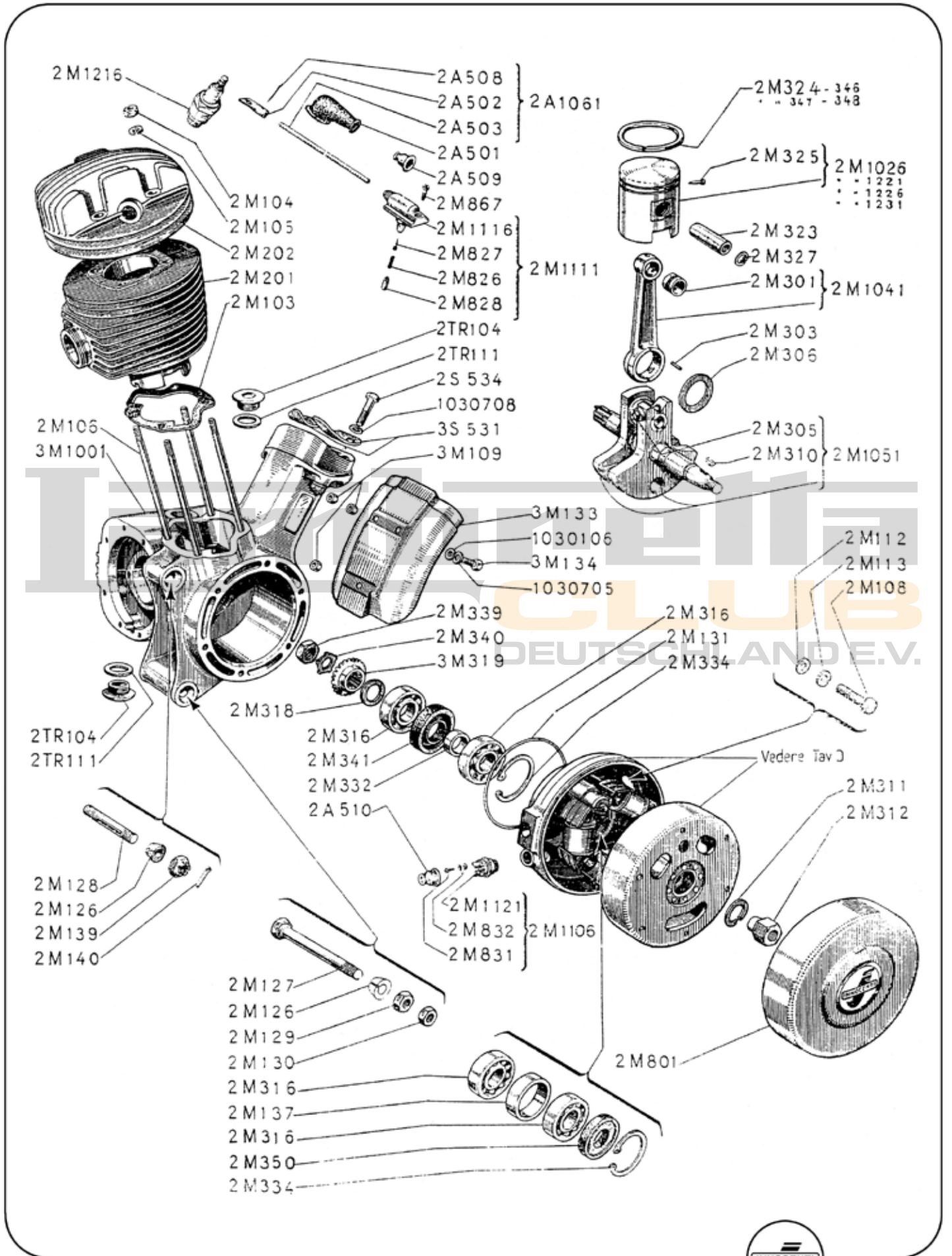
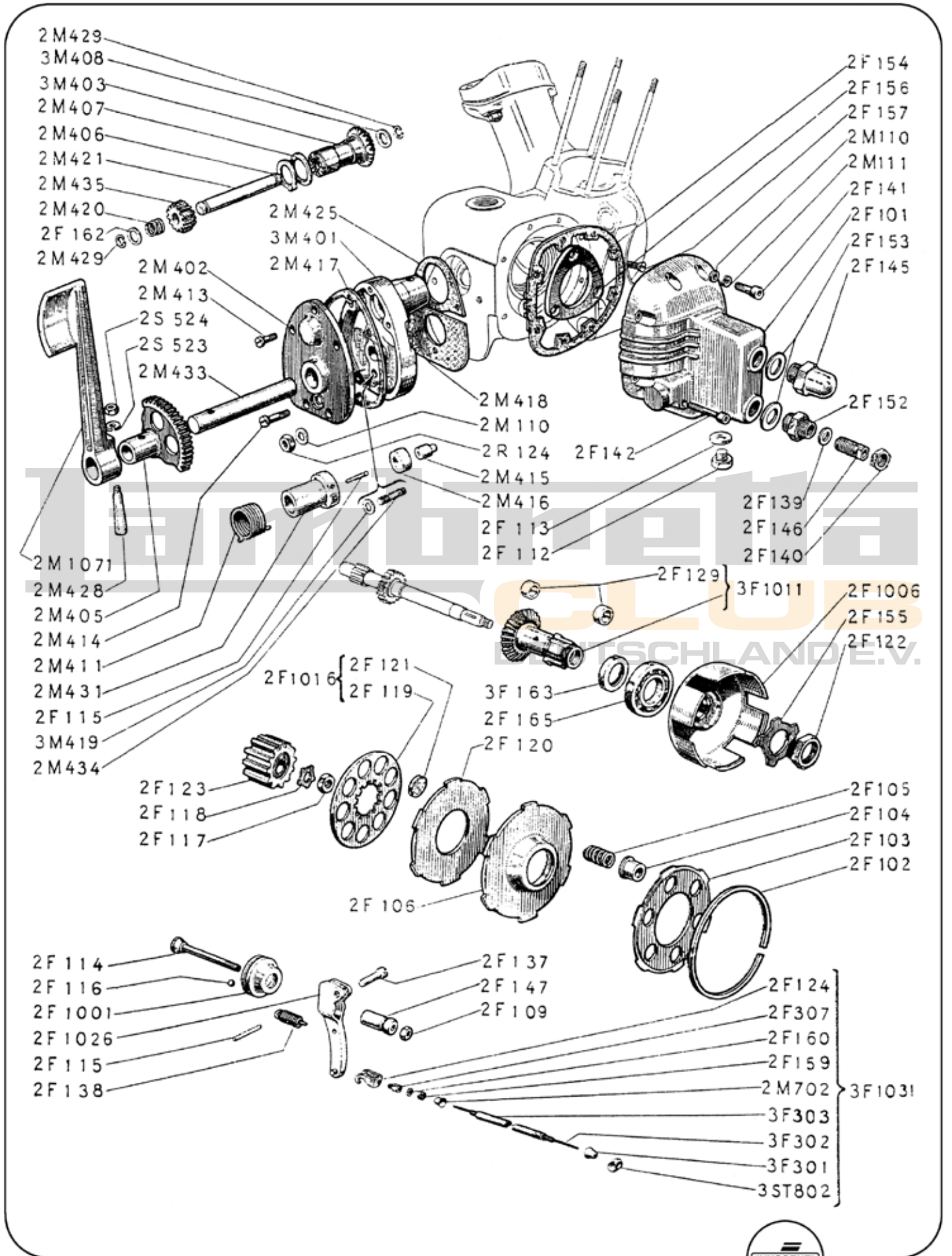


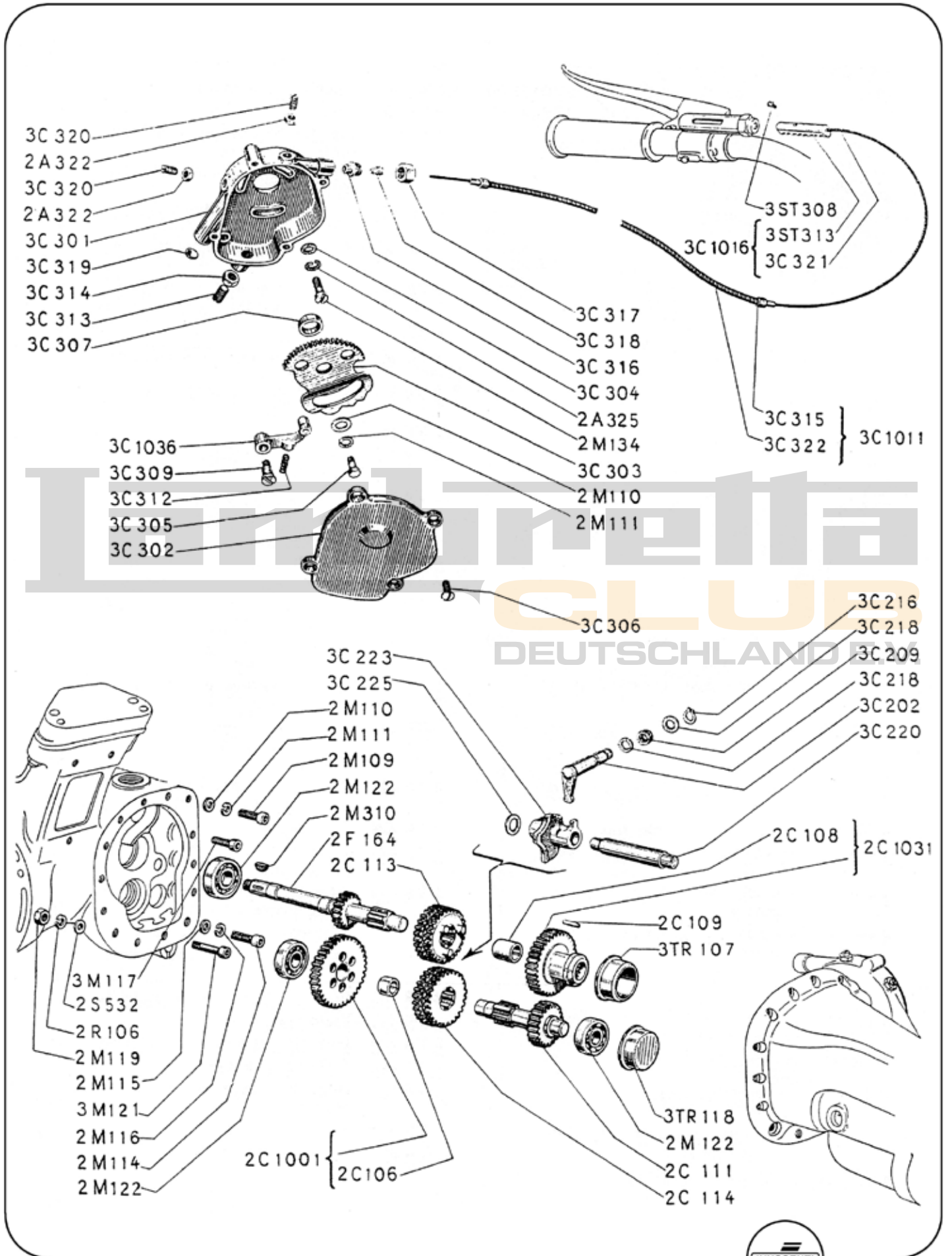
## Motore e accensione



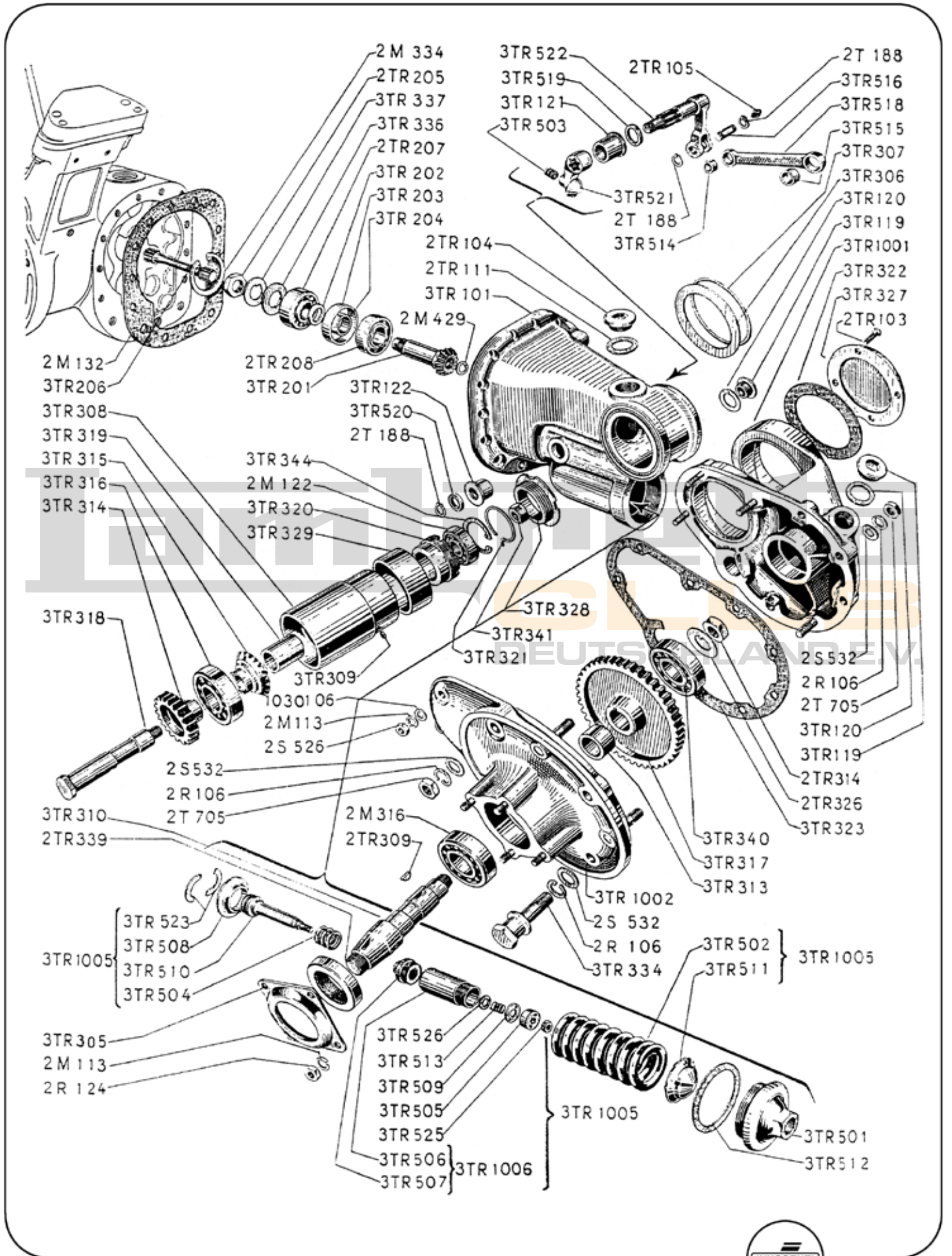
Frizione con comando, avviamento motore

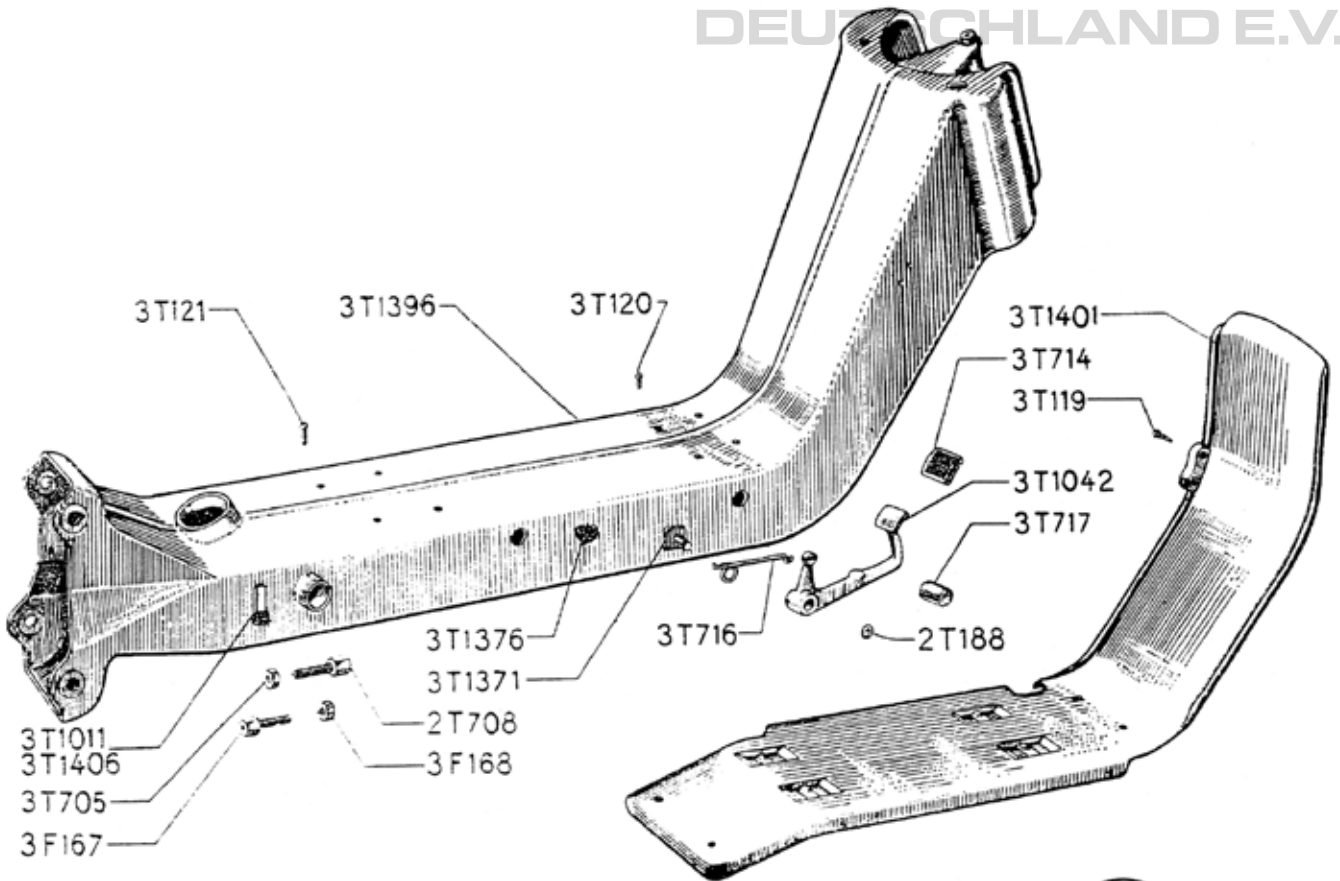
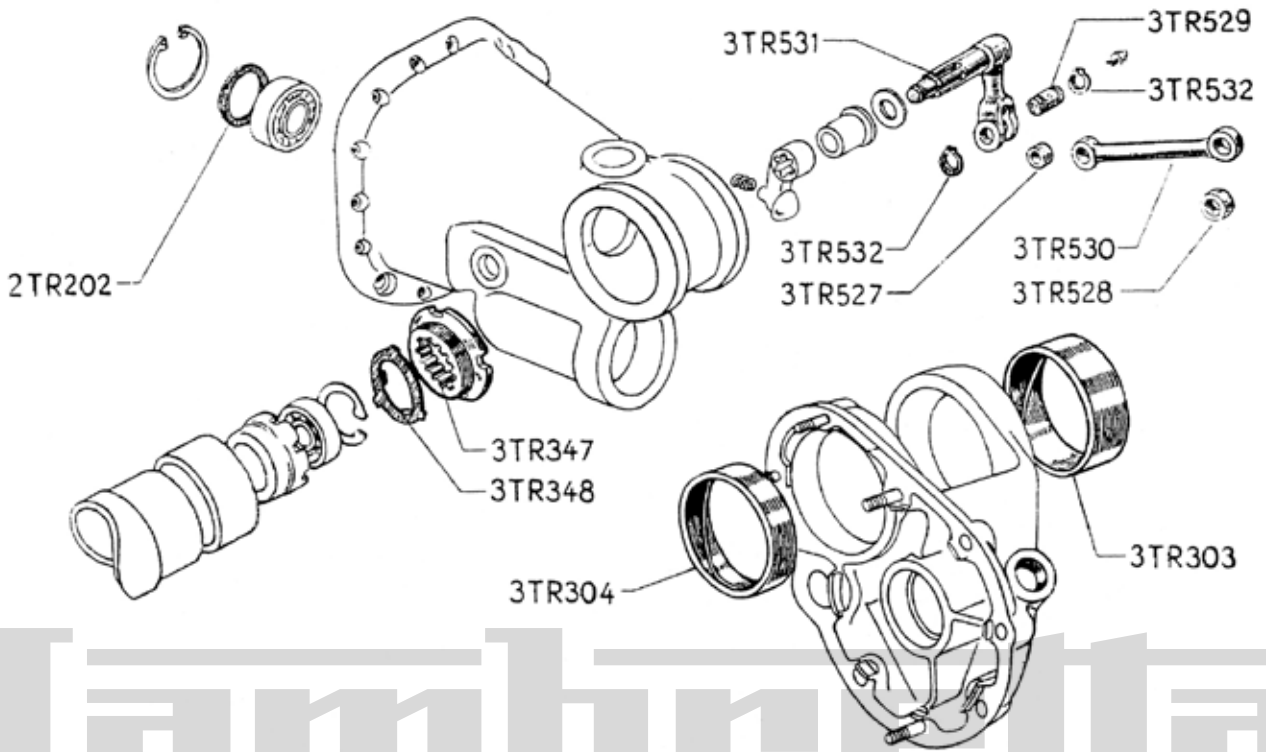


Cambio con comando

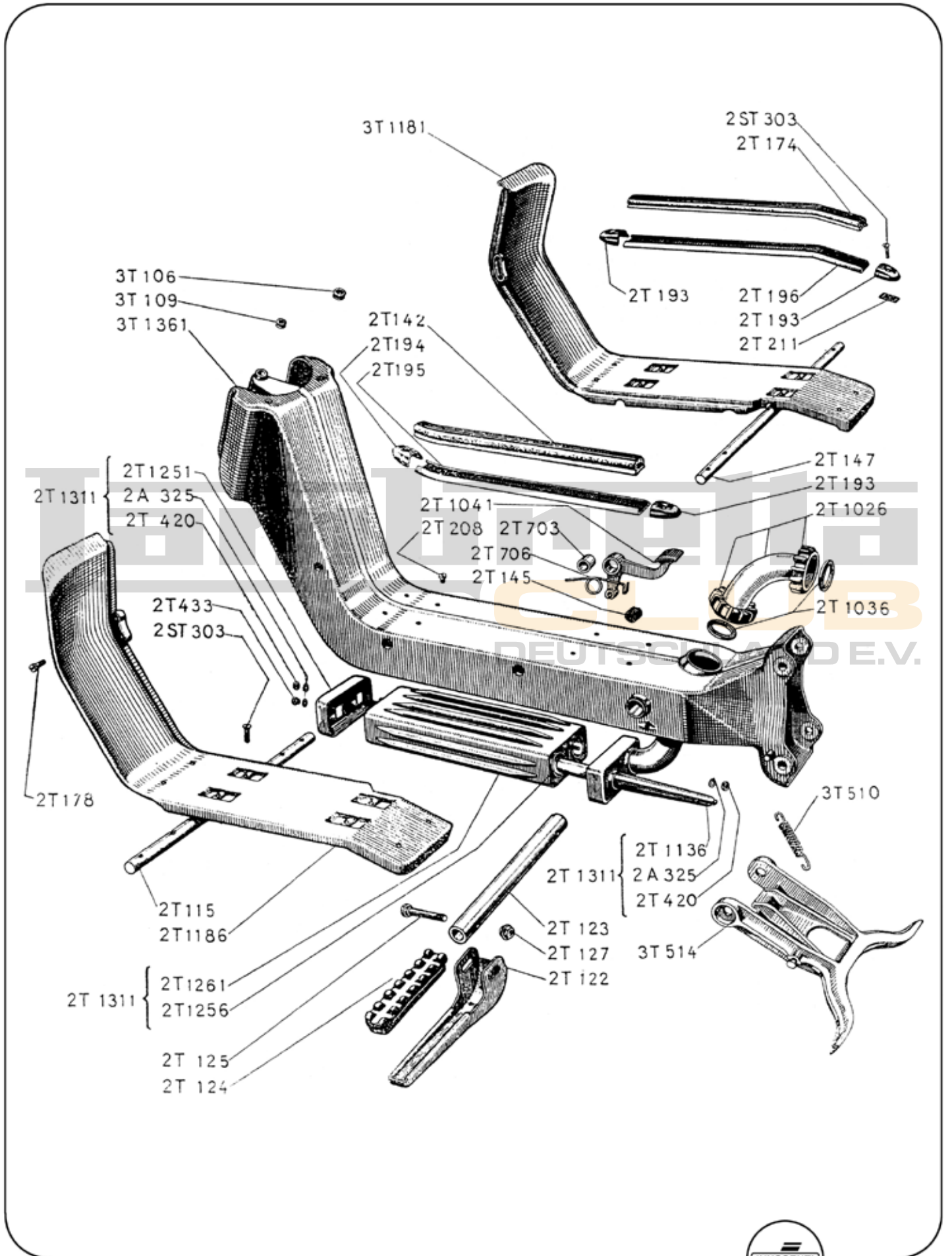


Trasmissione e sospensione posteriore

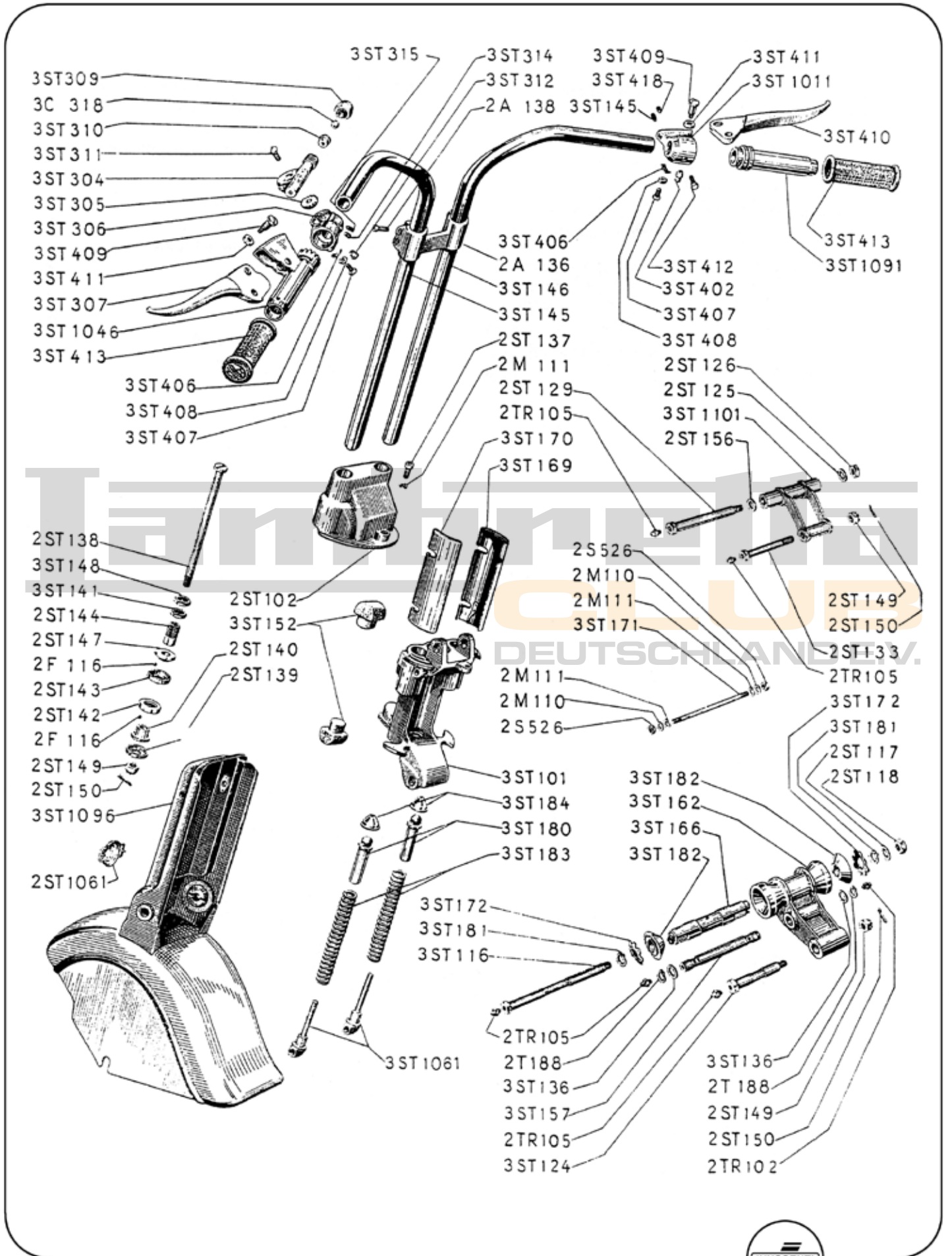




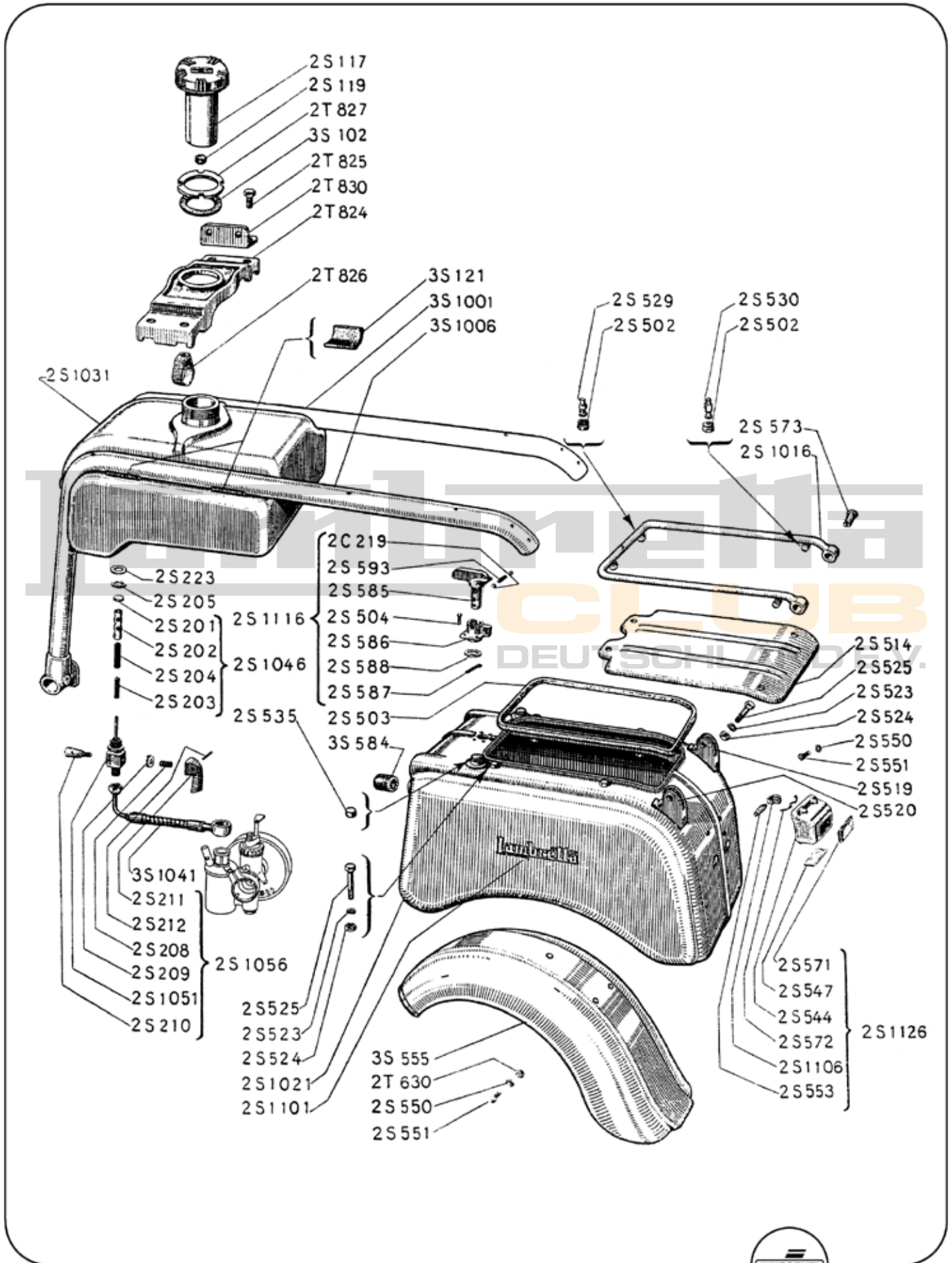
Telaio, marmitta e cavalletto alza ruota



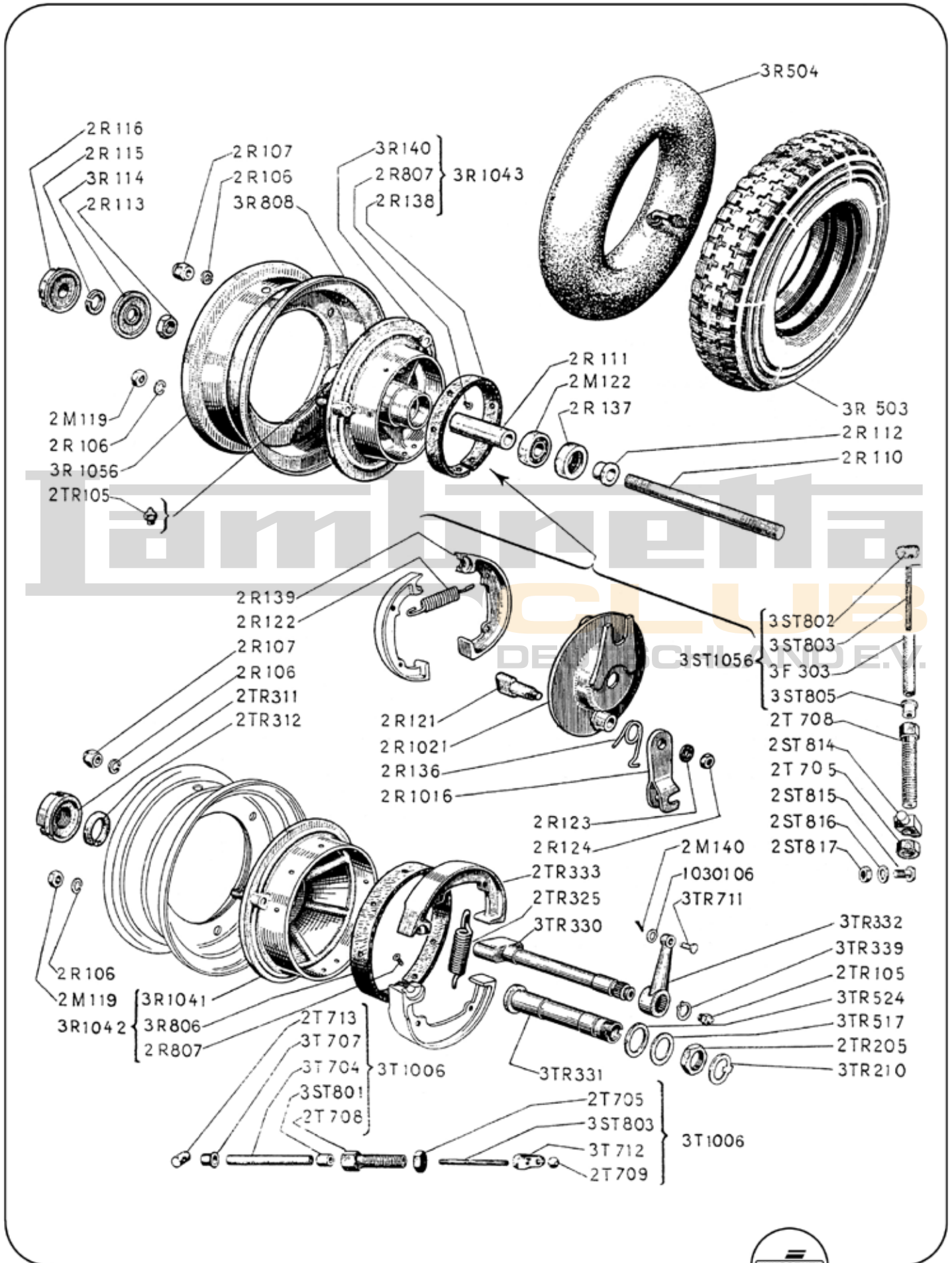
## Sterzo e comandi cambio, frizione, freno anteriore e gas

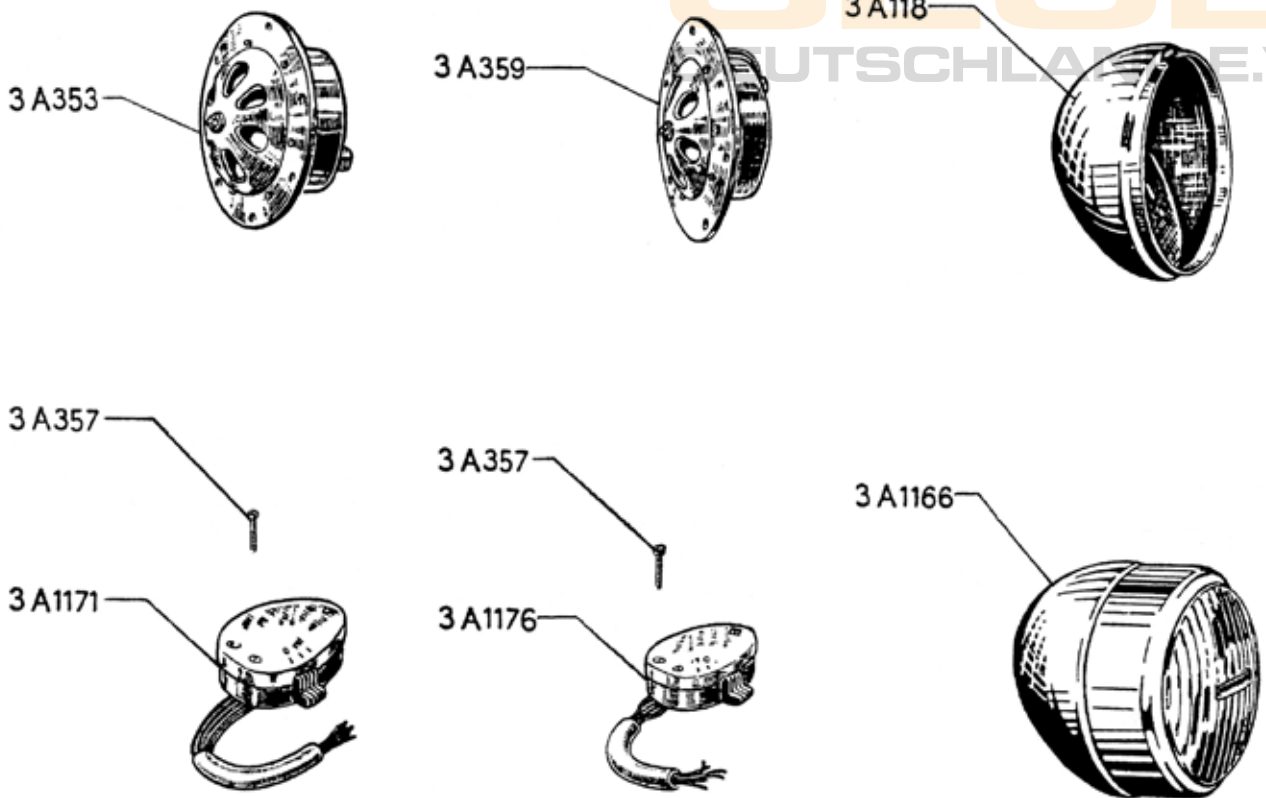
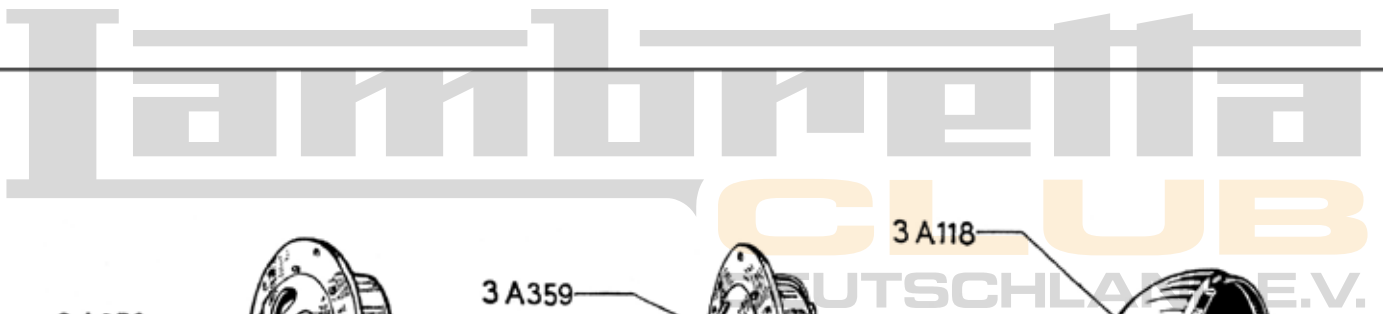
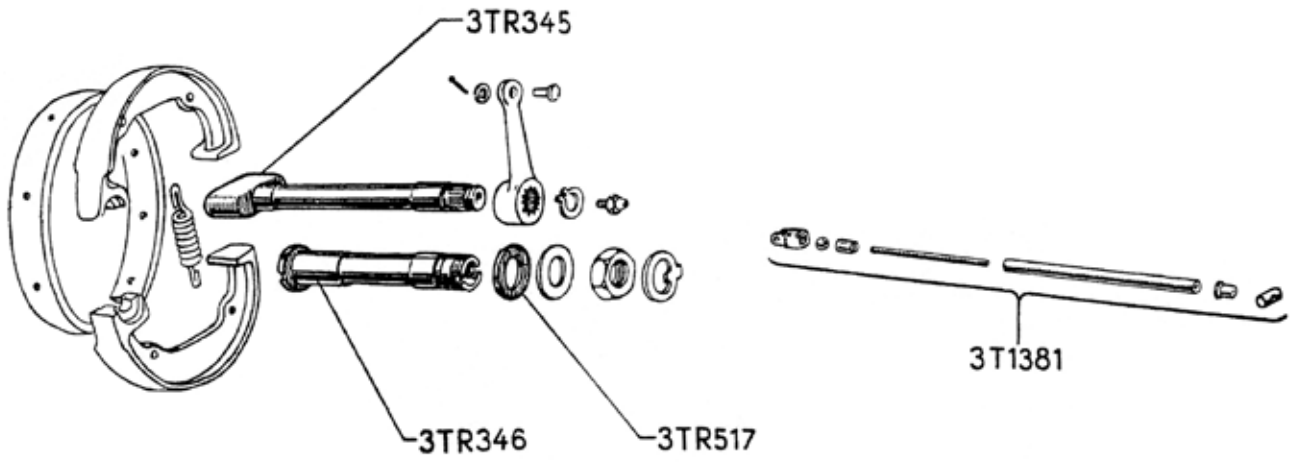


Serbatoio bauletto e fanalino posteriore



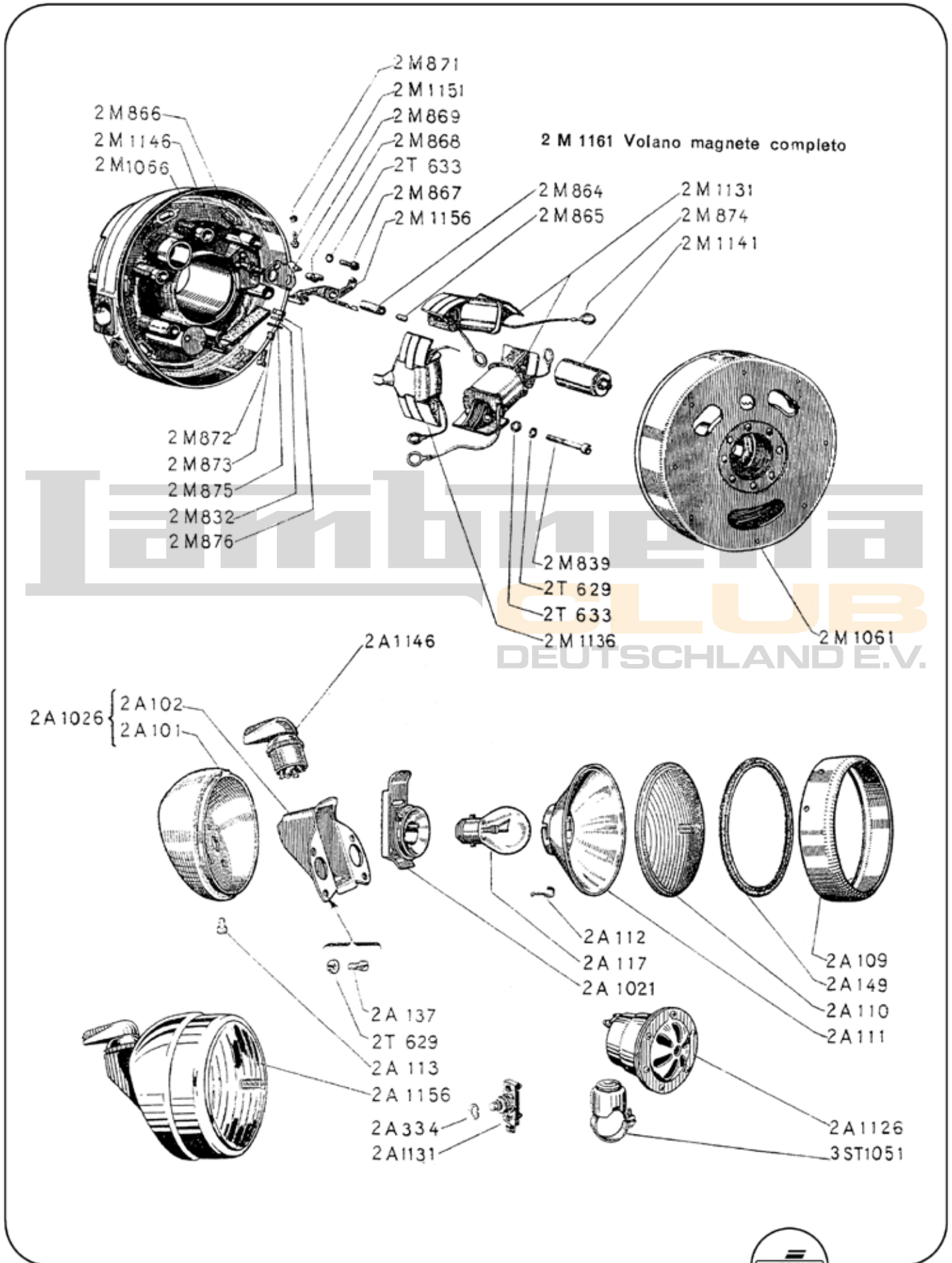
Ruote con freni e bowden di comando



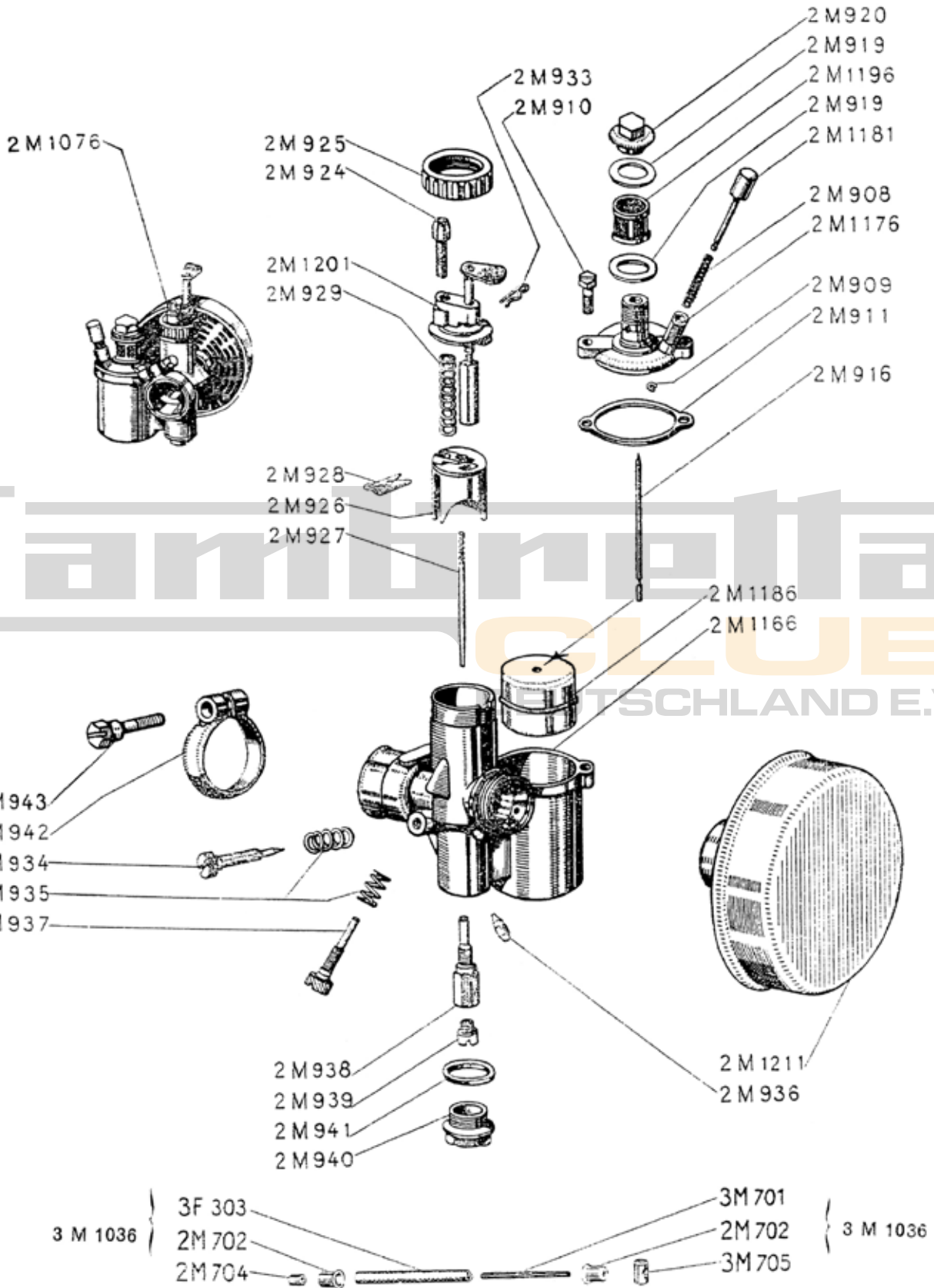


## Apparecchiature elettriche

Volano magnete, fanale anteriore, commutatore, segnalatore acustico e bottone di massa

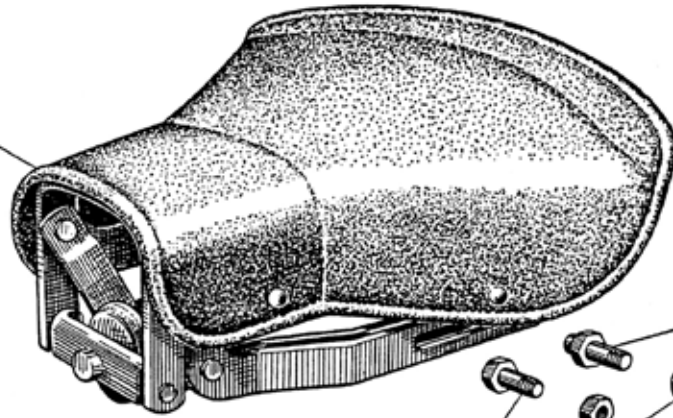


Carburatore e bowden comando gas



Sella anteriore e accessori

2T1366



2T828

2T831  
2T829

Lambretta

CLUB  
DEUTSCHLAND E.V.

2A1056  
2A905  
2A1086

2A906

